

# Main Development Site Forum

Tuesday 16<sup>th</sup> January 2024

7pm



# Welcome and Introductions

---



# Forum Chairs



Brian Stewart OBE, Chair of the Northern and Southern Transport Forums.

*Also Chair of trustees for Papworth Trust and the Anglian Great Ouse Regional Flood and Coastal Committee.*



Christine Abraham, Community Forum Chair

*Former CEO of Community Action Suffolk*

# Sizewell C Team

David Peacop

Site Operations Director

Richard Bull

DCO Lead

Rick Watler

Site Delivery Lead

Marjorie Barnes

Head of READ

Tim Newton

Site Security Manager

Richard Knight

Senior Community Relations Manager

Spencer Bowdler

Site Operations – Site Lead

Zoe Botten

Community Relations Manager

Jez Porter

SPM Associated Developments  
Highways



# AGENDA

- Welcome and Introductions
- Purpose of the Forum – Terms of Reference
- Development Consent Order Implementation
- Main Site update:
  - Main Development Site
  - Ancillary Construction Area
  - Temporary Construction Area
  - Main Construction Area
  - Accommodation Campus
  - Overall Programme
- Community Safety:
  - Policing Team
  - Worker Code of Conduct
- Q&A – via Town and Parish Representatives
- AOB

# Purpose of MDS Forum



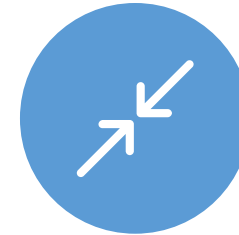
TO PROVIDE PROJECT  
INFORMATION OF  
RESPECT OF RELEVANT  
CONSTRUCTION ISSUES  
AND PROGRESS



ENABLE LOCAL ELECTED  
REPRESENTATIVE TO ASK  
QUESTIONS AND RAISE  
QUESTIONS OF  
CONCERN.



INFORM SZC ON KEY  
ISSUES AFFECTING THE  
LOCAL COMMUNITY IN  
THE IMMEDIATE  
VICINITY OF MDS.



TO FIND WAYS TO  
MINIMISE THE IMPACTS  
AND MAXIMISE THE  
BENEFITS.



ANY RECOMMENDED  
ACTIONS FROM THE MDS  
WILL BE ESCALATED BACK  
TO THE DELIVERY  
STEERING GROUP

# DCO Implementation



# Main Development Site

Overview



Campus



Temporary Construction Area (TCA)



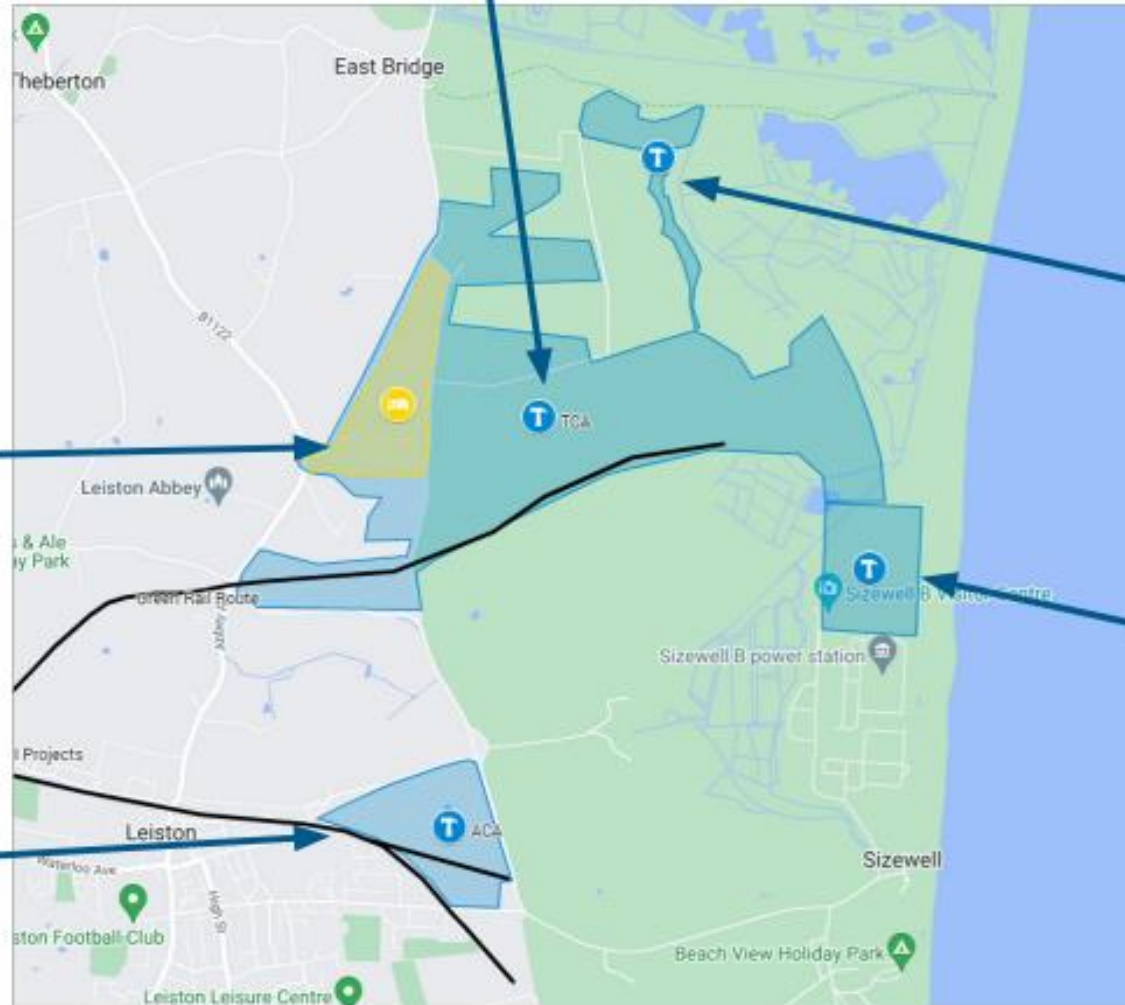
Marsh Harrier Reserve Project



Main Construction Area (MCA)



Ancillary Construction Area (ACA)





# Ancillary Construction Area (ACA)

## GEOGRAPHICAL



## CURRENT



## OPERATIONAL



## KEY ASPECTS

- Rail Head
- Caravan Pitches
- Stockpiles
- Park and Ride

# Temporary Construction Area (TCA)

## GEOGRAPHICAL



## CURRENT



## OPERATIONAL



## KEY ASPECTS

- Campus (accommodation and surrounding infrastructure)
- Rail siding
- Stockpile areas
- Haul routes to and from MDS
- Concrete batching plant
- Prefabrication facilities
- Security facilities

# Main Construction Area (MCA)

## GEOGRAPHICAL



## CURRENT



## OPERATIONAL

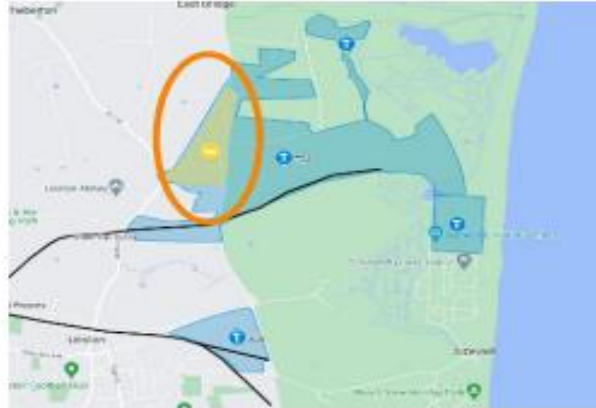


## KEY ASPECTS

- Nuclear Island containing two EPR Reactors
- Produces 3.2GW of Power
- Sits alongside Sizewell A and B Power Stations

# Campus - Located on the TCA

## GEOGRAPHICAL



## CURRENT



## OPERATIONAL



## KEY ASPECTS

- Up to 2,400 beds
- Recreation building (restaurants, kitchens, gyms, prayer rooms, service rooms)
- Reception building (management space, medical facility, administration)
- Emergency equipment store for wider site
- 1,627 car parking spaces (inc EV charging)
- 120 motorcycle and 120 bicycle spaces

# Key Activities

- Site Establishment Early Access Route construction at TCA
- 40mph speed limit on Lover's Lane
- King George's Avenue access improvements to ACA
- ACA Welfare construction completed and occupied
- Benhall fen meadow completed

# HGV Management

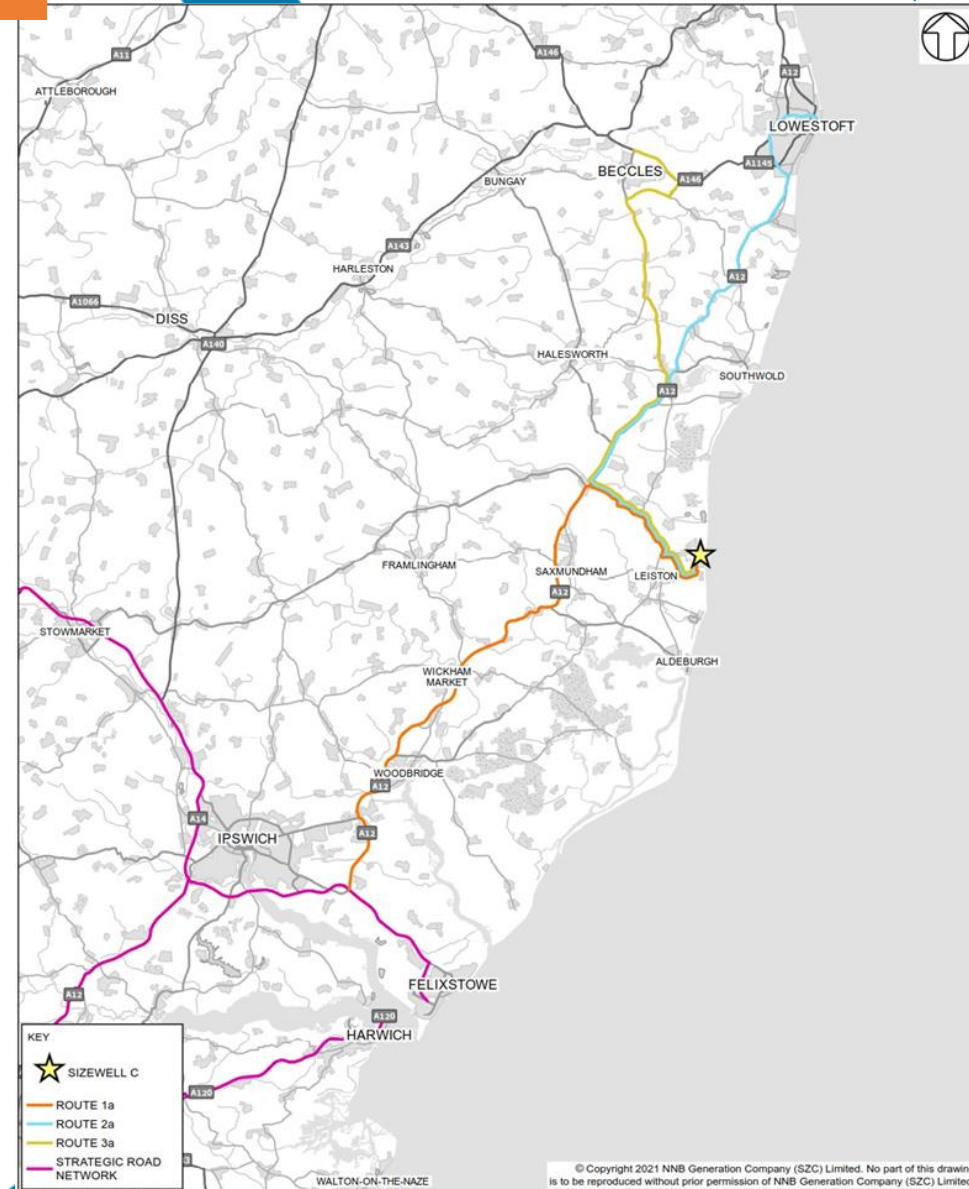
The Construction Traffic Management Plan (CTMP) includes prescribed HGV routes and HGV caps as well as other measures and controls.

Initially the cap is 600 two-way HGVs and buses per day (300 each way).

SZC is not expecting to operate at the HGV daily cap until towards the end of 2024.

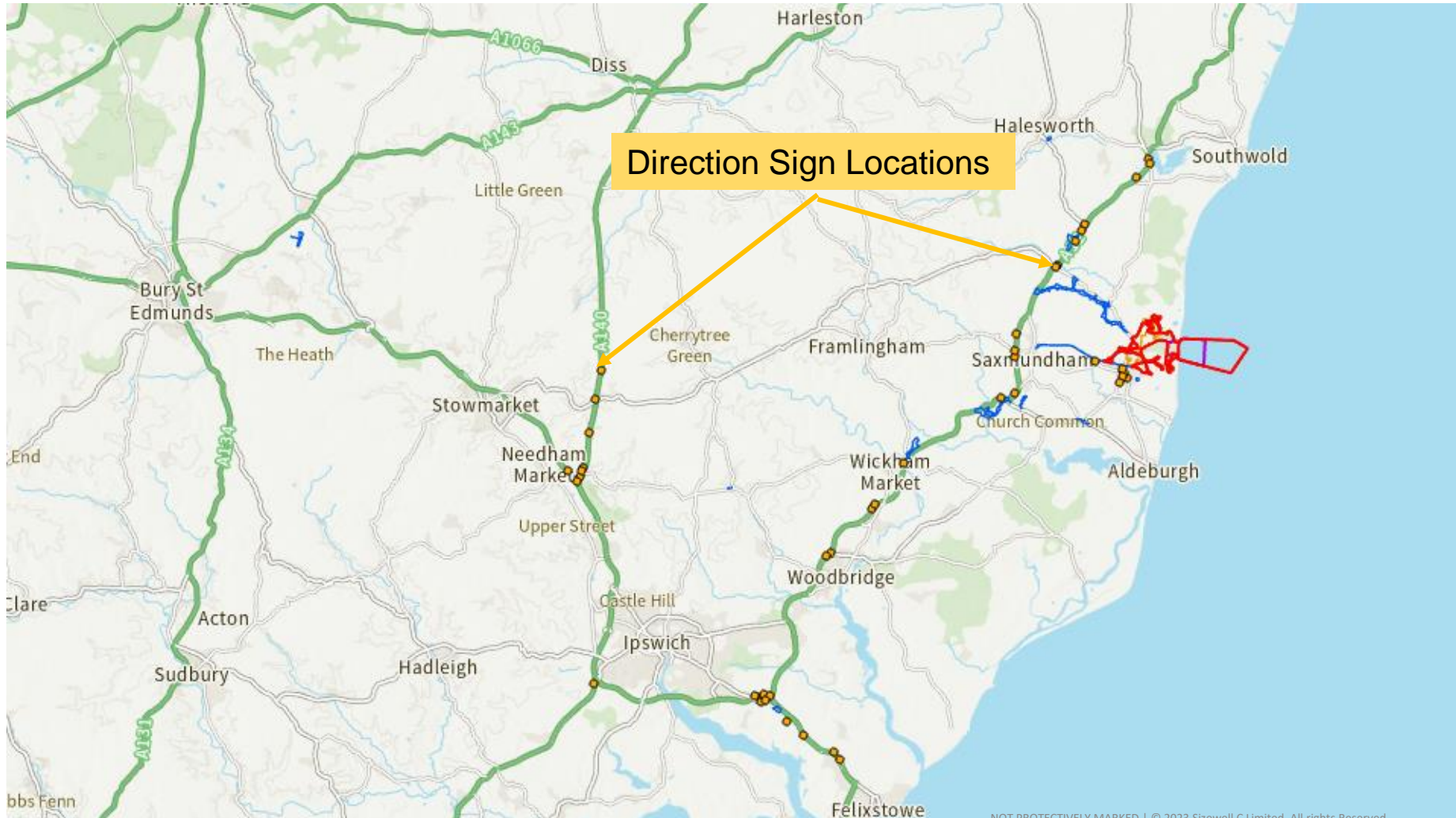
The HGV caps and routes will be monitored with the Delivery Management System (DMS), which is in operation.

Monitoring data will be reported to the Transport Review Group and the Transport Monitoring Reports made public.



# Traffic Management

## Countywide Highways Signage



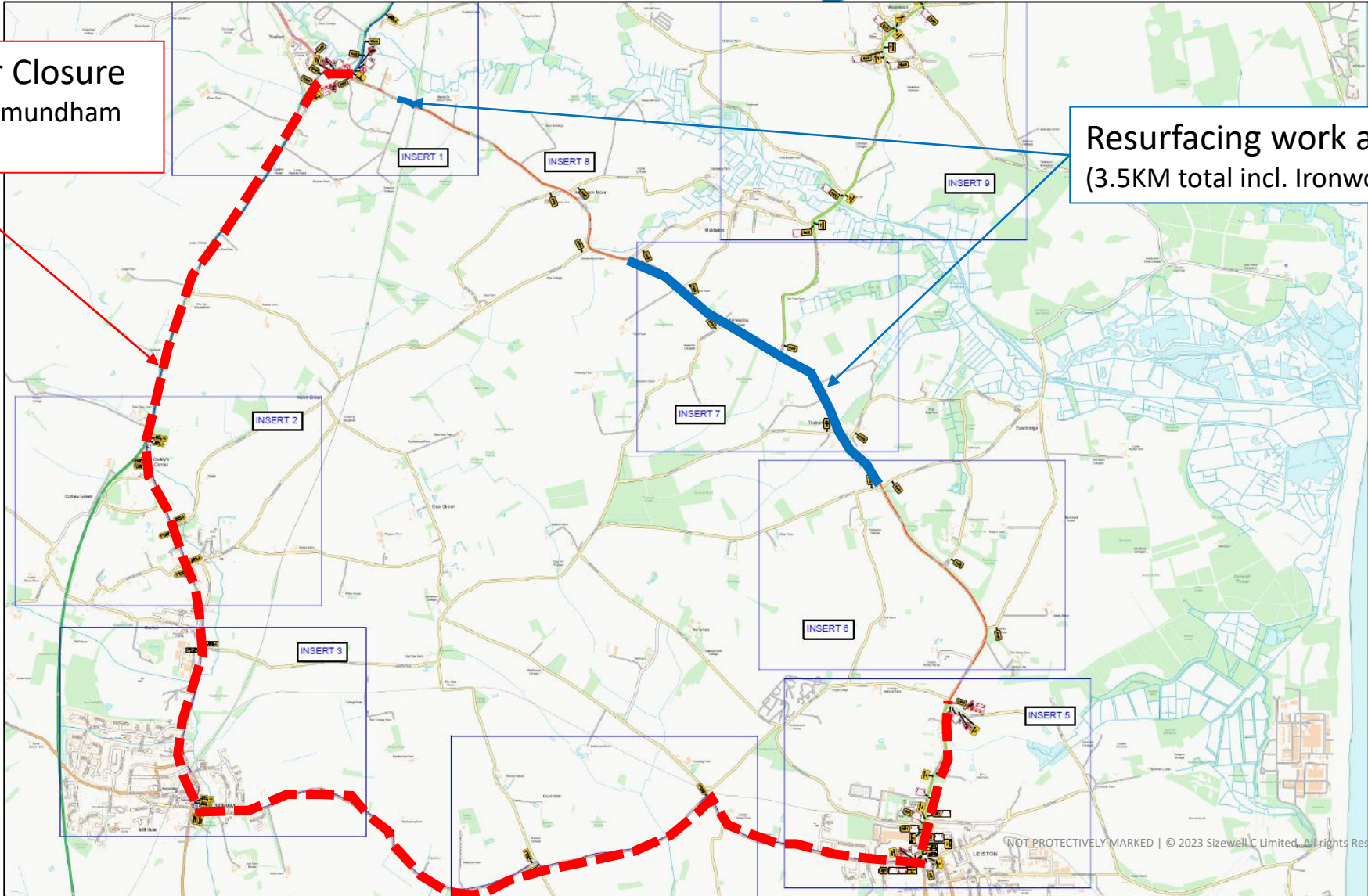
# Traffic Management

## B1122 Resurfacing

Diversion route for Closure  
(South down A12 to Saxmundham  
& along the B1119)

Resurfacing work along the B1122  
(3.5KM total incl. Ironwork adjustment)

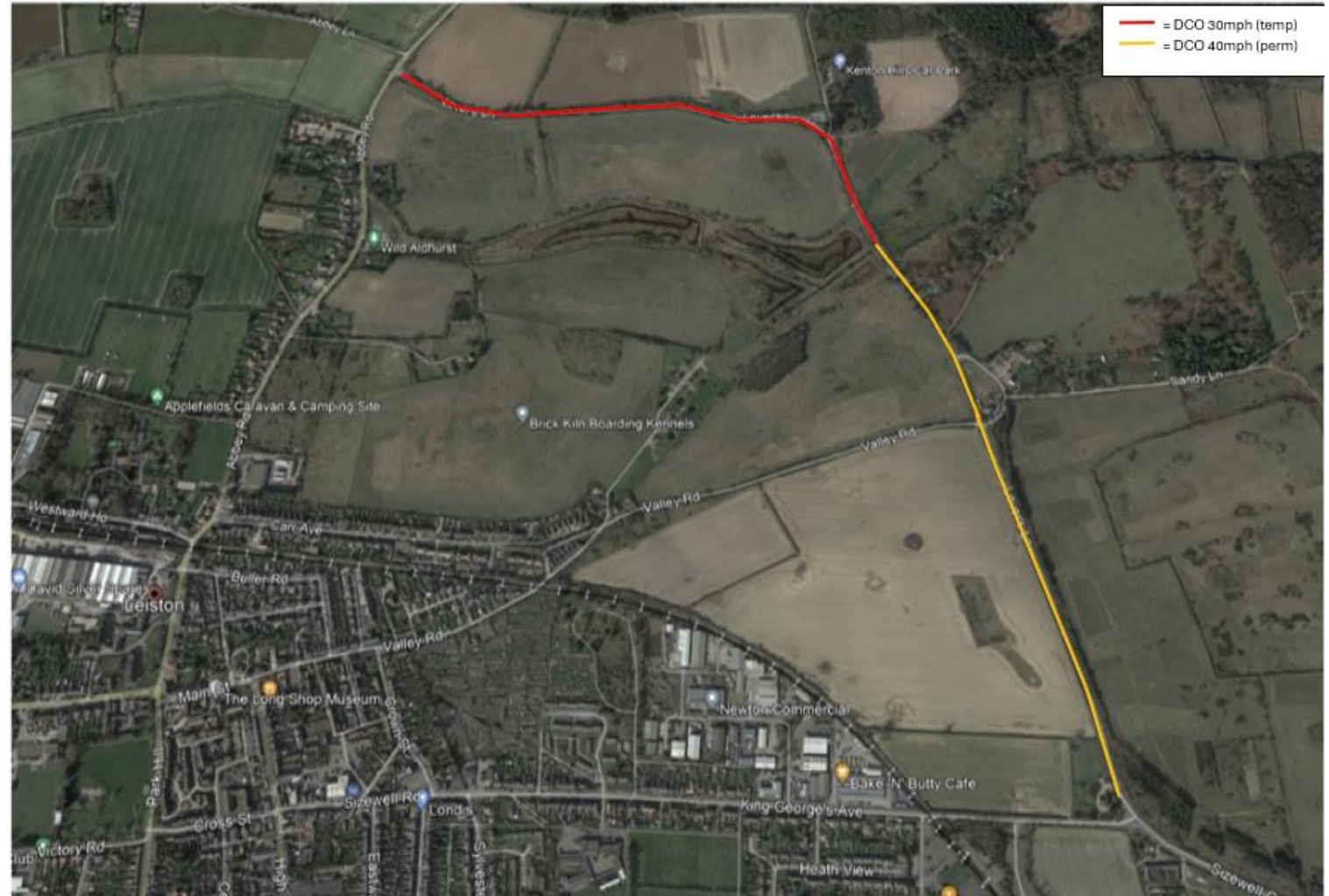
March 2024





# Speed Limits and Compliance

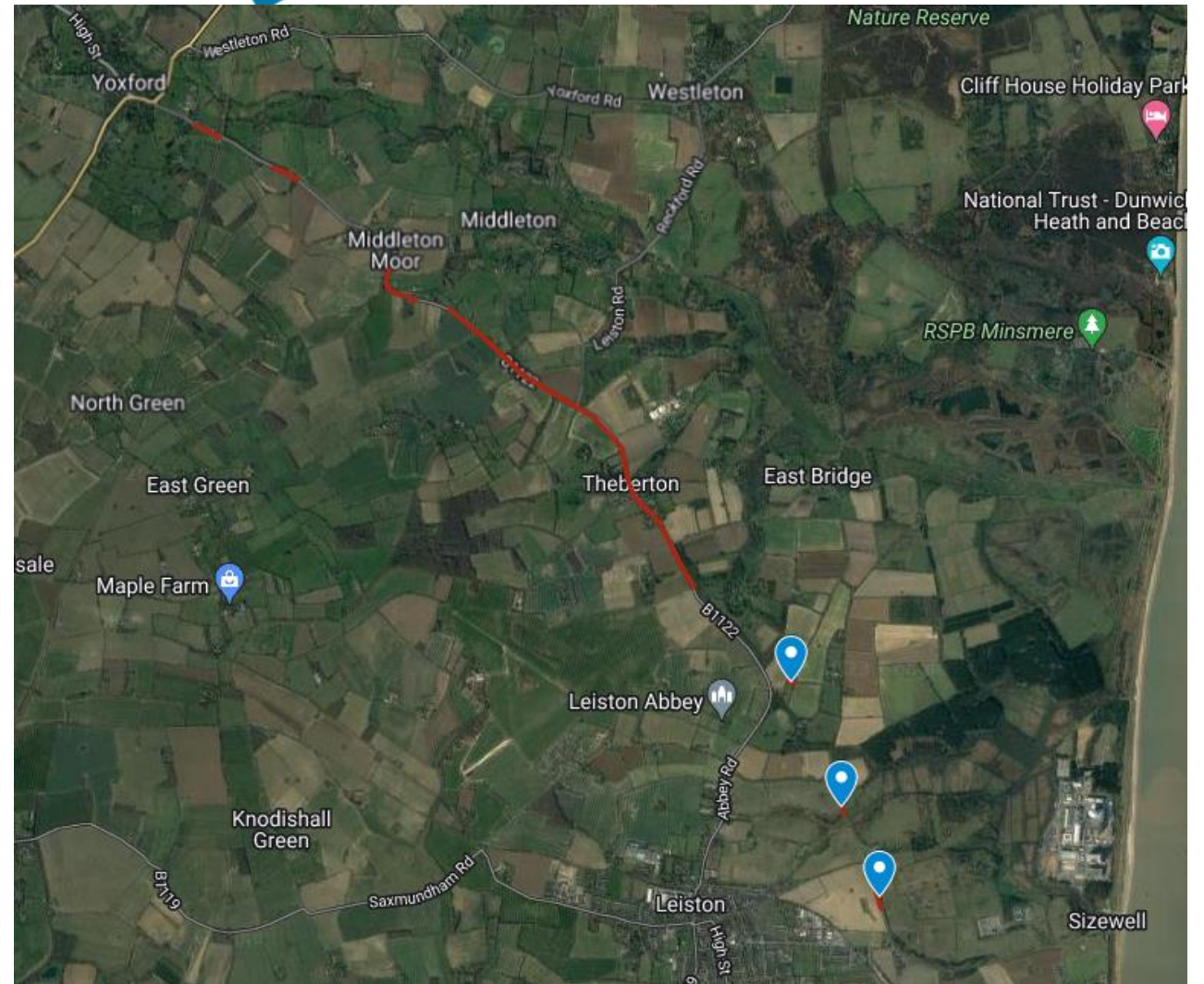
- Lover's Lane – DCO powers for temporary 30mph / permanent 40mph.
- SZC Co is liaising with the authorities and Town / Parish Councils to monitor speed compliance on the B1122 and B1125.
- A12 average speed cameras - to be operational from Spring 2024 for ~8wks opposite Friday St.



# Traffic Management

## Schemes – Phase1 H1 2024

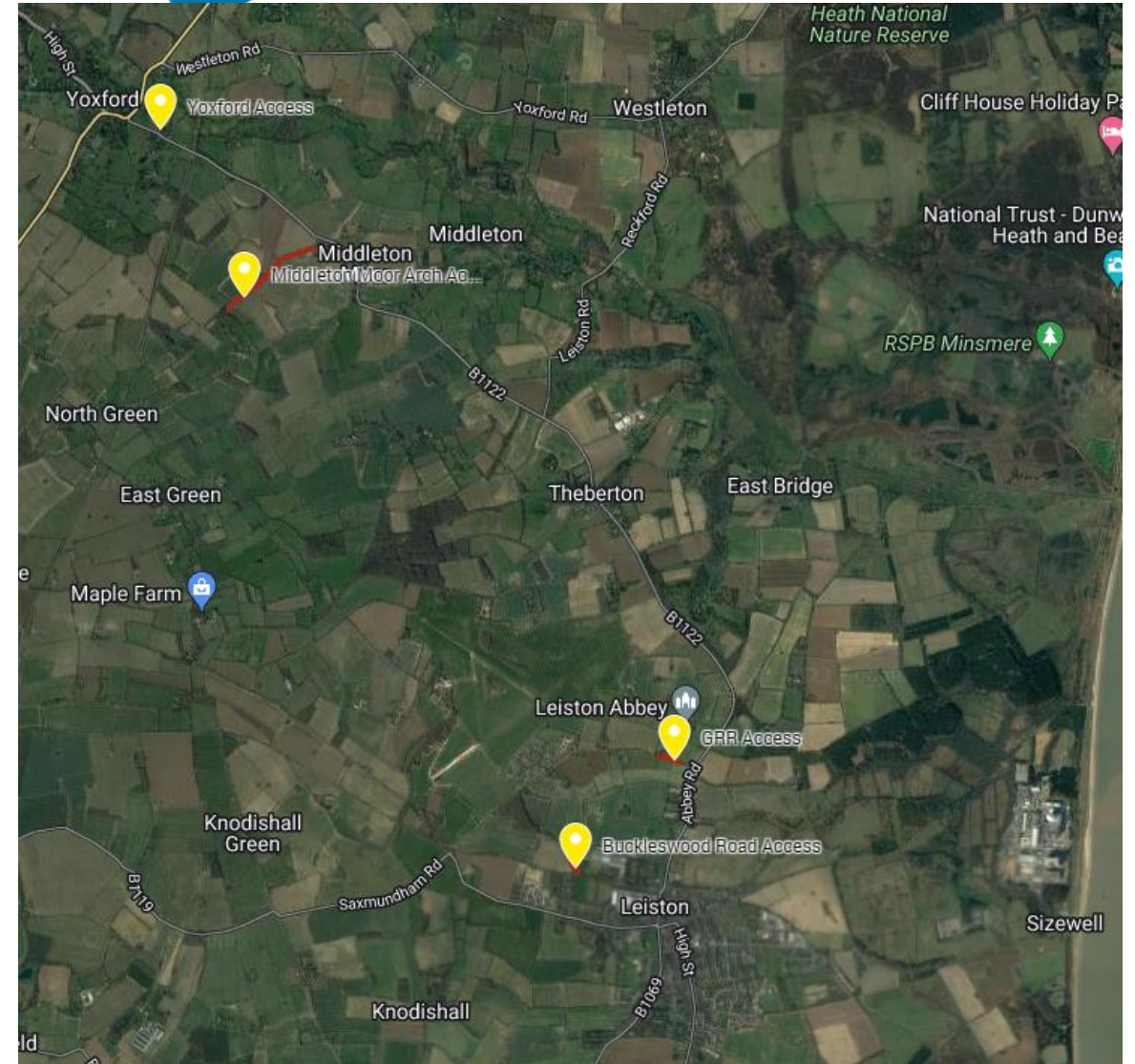
- Aldhurst Farm Access Improvement
  - Circa 1 week, lane closure
- Upper Abbey Farm Drive Access
  - Circa 1 week, Private Road Closure/Limited Access
- ACA Secondary Access
  - Circa 1 week lane closure
- B1122 Resurfacing
  - Rolling TM through Q1



# Traffic Management

## Schemes – Phase 2 H1 2024

- Buckleswood Road Access Install
  - Circa 1 week lane closure
- Green Rail Route Access Install
  - Circa 1 week lane closure
- Yoxford Access Install
  - Private Road limited accesses circa 1 week
- Middleton Moor Access
  - Circa 2 week Road Closure



# Worker Code of Conduct

- The conduct of the SZC workforce in the community is of the highest importance. It is for that reason that everyone involved with the SZC Project is expected to:
  - Be responsible for your safety and the safety of others by complying with all applicable laws, rules, and regulations;
  - Be ambassadors for the project through your behaviour and actions on site and in the community, including in the use of social media
  - Refrain from anti-social behaviour, discriminatory behaviour or harassment on and off site
  - Ensure that they are not intoxicated by alcohol or under the influence or illegal drugs
  - Respect colleagues and endeavor to maintain harmonious workplace relations at all times.
  - Ensure that rented accommodation is maintained in a tidy state with the proper disposal of rubbish.
  - Ensure that personal noise levels are appropriate to the time of day and location
  - Ensure no damage of any kind is caused to property on the off site
  - Respect speed limits and be aware of other road users, agricultural vehicles and livestock
- **‘By attending and completing the SZC Site Induction and receiving access to SZC site you are confirming your commitment to the expectations described above’.**

# Q & A

- Leiston-cum-Sizewell Town Council
- Theberton and Eastbridge Parish Council
- Middleton-cum-Fordley Parish Council
- Aldringham-cum-Thorpe Parish Council
- Aldeburgh Town Council
- Knodishall Parish Council
- East Suffolk Council representing Aldeburgh and Leiston Ward
- Suffolk County Council representing Leiston Division

# Main Development Site Forum

## DATE OF NEXT MEETING

Tuesday 16<sup>th</sup> April 2024  
19:00

Leiston Town Athletic Association  
Victory Road  
Leiston  
IP16 4DQ

Thank you